

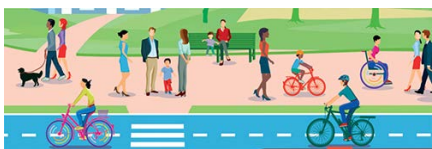
NORTH TAUNTON WOOLWAY PROJECT TRAVEL TIPS



WELCOME TO YOUR NEW NEIGHBOURHOOD

We want to help make your journeys as easy as possible. So, this leaflet will arm you with lots of useful information on reaching your destinations using a range of methods – including some you may not have tried before. You may discover that cycling, walking or catching a bus could save you time and money, as well as keeping you fit – they're better for the environment too. A National Cycle Network route actually runs through the town and there are lots of interesting places to visit within walking distance. So, take a look at the key points covered here and visit the listed websites for comprehensive details.

As a welcome, we are delighted to offer you this Travel Information Pack for the local area.



CYCLING SAVES MONEY AND KEEPS YOU FIT

Cycling keeps you fit and healthy, as well as being a cheaper alternative to running a car or using public transport. Cycling will also reduce your carbon footprint and help the environment. Cycling doesn't take long – within a 10 minute cycle you can reach Taunton town centre.

Sustrans is the UK's leading sustainable transport charity, with loads of useful information and tips on cycling available on their website www.sustrans.org.uk

On Road Tips

- Ride in a position where you can see and be seen
- Make eye contact with another road users
- Signal clearly at all times
- Follow the Highway Code
- Watch your speed
- Give way to pedestrians

Off Road Tips

- Watch your speed
- Use your bell
- Its courteous to say thank you if people move out of your way
- Give way to pedestrians
- Stay Left
- Take care at junctions

Stay safe while cycling

- Aim for quiet streets and cycle paths
- Undertake regular bike maintenance checks
- A bell, lights and a pump are essential
- Carrying a spare inner tube is recommended
- Wearing a helmet is recommended
- Carry a lock
- Use front and rear cycle lights and rear reflectors during hours of darkness

Cycle routes

Taunton has an extensive local cycle network consisting of quiet roads, traffic free, and signed cycle routes that are well connected to the National Cycle Network.

Lyngford Lane and Dorchester Road, which are very close to where you live, are suggested on road routes that connect to a traffic-free cycle path at Lyngford Park. An off-road route crosses the park and connects to the wider cycle network in Taunton, including the National Cycle Network (NCN) Route 3 going east-west through the town from Tiverton to Bridgwater.

Cycle Training

If you are over 16 years of age you are eligible for free cycle training sessions from Life Cycle UK. There are no hidden costs or catches.

Life Cycle UK run free cycle training sessions for both adults and children, as well as bike vouchers for money off bicycles and cycle equipment. It also provides subsidised cycle parking to Somerset residents through its Get Somerset Cycling campaign in partnership with On Your Bike, Taunton Area Cycling Campaign, and Somerset Community Council. Whether you're a complete beginner, would like to boost your confidence or want to develop more advanced skills, it's easy to get some coaching that fits your needs. You can book a one-to-one, or group sessions with an instructor.

To find out more information visit the Get Somerset Cycling section on the Life Cycle UK website www.lifecycleuk.org.uk/get-somerset-cycling



PLAN YOUR TRIPS

Journey Planners The Think Travel website provide information about travel options in Somerset and includes journey planning tools. <https://somerset.thinktravel.info>

Traveline is another useful journey planning tool and can be found at: www.travelinesw.com



CAR SHARING MAKES SO MUCH SENSE

Car sharing is a more sustainable way of travelling by car, and a great way of reducing the number of cars on the road at the same time. Car sharing involves two or more people sharing a vehicle rather than driving separately. Other benefits of car sharing include:

- Reduced travel costs as petrol costs can be shared
- More sociable travel
- Easier parking at many offices which now offer dedicated 'car share' parking spaces.

Finding a car share partner

Register your journey details on the national Liftshare website to see if anyone else is travelling in the same direction and similar times. www.liftshare.com





MAKING THE RIGHT CONNECTIONS BY TRAIN

Railway Station

The local railway station is close to the town centre, about 1.6 km south of your house. It is a 5-10 minute cycle, 10 minutes by bus, or a 20 minute walk. Cycle parking is available at the station forecourt. Car parking is also available at a new multistorey car park. There are trains every 15 minutes on average from Taunton to Exeter, and trains roughly every 30 minutes to destinations including Bridgwater, Bristol, Plymouth and Penzance. There are hourly trains from Taunton to London via Reading, and another hourly train to Birmingham.

Train Information:

Information to assist with planning journeys, ticket prices, rail cards and purchasing tickets is available from train operator websites or national train ticket websites:

National Rail – www.nationalrail.co.uk

Great Western Railway – www.gwr.com

Cross Country Trains –

www.crosscountrytrains.co.uk

 Great Western Railway





WALKING IS ALWAYS BEST

Walking is a great way to discover more about your community, improve your fitness and save money on travelling. There are a number of benefits of regularly walking for short and local journeys:

- Walking doesn't take long – within a 20 minute walk you can reach Taunton railway station and most local facilities listed.
- It's free – walking is free and you don't need any special equipment;
- It's healthy – regular walking can reduce the risk of many health problems such as coronary heart disease, strokes, high blood pressure, anxiety and stress;
- It improves your quality of life – walking can help with weight control, stamina and energy levels; and
- It's convenient – you can walk to most places at any time. You can also start slowly and gently over time build up pace and distances.



GET AROUND BY BUS

A number of bus services run in your local neighbourhood. These are on Warwick Road close to Glen Drive, on Rochester Road at its northern end near Warwick Road, in the middle near Oxford Place and at its southern end near Dorchester Road. All bus stops are within a 4 minute walk of your house.

Bus Service 1 and 1E operated by Buses of Somerset call at these stops. Bus Service 1 operates from The Parade in Taunton town centre – Taunton Railway Station - Wellsprings – Ladymead Road – back to the Parade, and generally operates every 20 minutes Monday – Friday 06:32 – 18:37. On Saturdays the service runs every 20 minutes between 07.32 – 18:37. Bus Service 1E is an evening service following the same route as Service 1, but also stopping at Silk Mills Park and Ride and Musgrove Hospital. It is an approximate hourly service running between 19:19 and 23:24 from the local bus stops. There are no services on Sundays and Bank Holidays.

Because of the works as part of the North Taunton Woolaway Project some services may be locally diverted.

There is a further bus stop on Selworthy Road, near its junction with Eastwick Road, within a 5–10-minute walk of your home. This is a stop for bus service 2 operated by Buses of Somerset. This operates between The Parade – Taunton Railway Station - Priorswood – Monkton Heathfield – The Parade, and operates every hour Monday to Saturday 07:28 – 17:58. There is no service on Sundays and Bank Holidays.

Bus Operator Contact information

Telephone: 0345 646 0707

Twitter: [@BusesOfSomerset](https://twitter.com/BusesOfSomerset)

Facebook: [@BusesOfSomerset](https://www.facebook.com/BusesOfSomerset)

Website: www.firstbus.co.uk/somerset/

Buses of Somerset is owned by First Bus and tickets can be purchased on the First Bus app. Bus users can currently travel within Taunton for £1 single fare and can also travel on most bus routes in Somerset for just £2 until 31st December 2023.

The latest information on bus ticket prices for daily, weekly, monthly or bundle fares, is available via the Official Price Guide.

First Bus App

The FirstBus App allows you to plan journeys, buy m-tickets which are slightly cheaper than buying on the bus, and track buses with real-time information. Find the app by searching FirstBus app in the Apple App Store or Google Play.



Dial-a-Ride

Somerset Accessible Transport is the local 'Dial-a-Ride' scheme with several minibuses available for hire for community groups, which also operate the Taunton and Wellington Slinky services. Slinky is an accessible bus service funded by Somerset County Council for people unable to access conventional transport. This service can be used for getting to local health appointments, exercise classes, visiting friends and relatives, going shopping or for social reasons. You can also use the Slinky connection to other forms of public transport.

Services available:

Monday to Friday 8am to 5pm, excluding Public Holidays Telephone: 01823 331266, booking lines are open Monday to Friday 9.30am to 3.30pm.



OR IF YOU NEED A TAXI

There are several local taxi drivers and firms in Taunton, including:

Taunton Taxi Services Tel: 01823248248

Tone Taxi Tel: 01823762240

K Taxis Tel: 07467133711

A Cabs Taunton Tel: 01823429406

TNT Taxis Taunton Tel: 01823241122

Friends Taxis Taunton Tel: 01823535353

